

# Retrospective clinical follow-up

## **BIOMESH<sup>®</sup> NEUROLOGICAL PATCHES [ANTI-ADHESION PATCHES]**

Synthetic dura-mater substitute

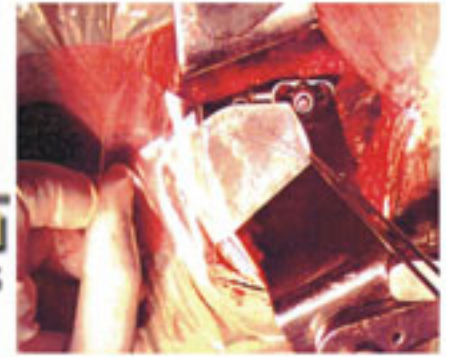
**COUSIN**

B I O T E C H

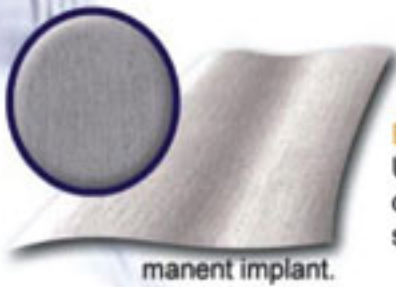


# BIOMESH® N3-N3L-N4

## NEUROLOGICAL PATCHES [ANTI-ADHESION PATCHES] CRANIAL AND SPINAL DURA-MATER SUBSTITUTES



Non-absorbable Biomesh® N3 - N3L - N4 patches are made of polyethylene terephthalate and dimethyl siloxane with a mix of fibres according to predefined directions. Their structure and their thinness are similar to the human dura-mater.



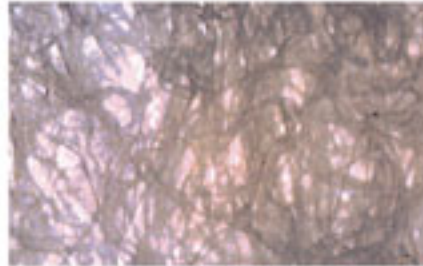
**BIOMESH® N3**  
Used in all cerebral dura-mater plastic surgeries as a permanent implant.



**BIOMESH® N3L**  
Is perfectly adapted to the anatomy thanks to its suppleness and optimal elasticity. Rather recommended for cerebral dura-mater surgeries.



**BIOMESH® N4**  
Especially made for the spinal dura-mater as a protection barrier to fibrosis and muscular masses, and yellow ligaments.



- >> The silicone impregnation immediately ensures the water-tightness of the implant at the suture point.
- >> The micro-porous side allows a quick tissue ingrowth and is progressively revitalised by the fibroblasts which make easier the recolonisation of the tissues.
- >> The silicone side limits anti-adhesion effects on the cortex.
- >> As synthetic implants, they offer a real biological safety.

### CHARACTERISTICS

	BIOMESH® N3	BIOMESH® N3L	BIOMESH® N4
Weight (g/m <sup>2</sup> )	240	130	240
Thickness (mm)	0.40	0.30	0.20
Breaking strength (N/5cm)			
Warp	330	55	120
Weft	120	20	120
Elongation (%)			
Warp	45	30	30
Weft	160	91	30

### ITEM NUMBERS AND SIZES

FBIO N3 0406 : 4 x 6 cm	FBIO N3L 406 : 4 x 6 cm	FBIO N4 0406 : 4 x 6 cm
FBIO N3 0610 : 6 x 10 cm	FBIO N3L 610 : 6 x 10 cm	FBIO N4 0610 : 6 x 10 cm
FBIO N3 0614 : 6 x 14 cm	FBIO N3L 614 : 6 x 14 cm	FBIO N4 0614 : 6 x 14 cm

Products packaged under double bag and strong box. Sterilized products.

