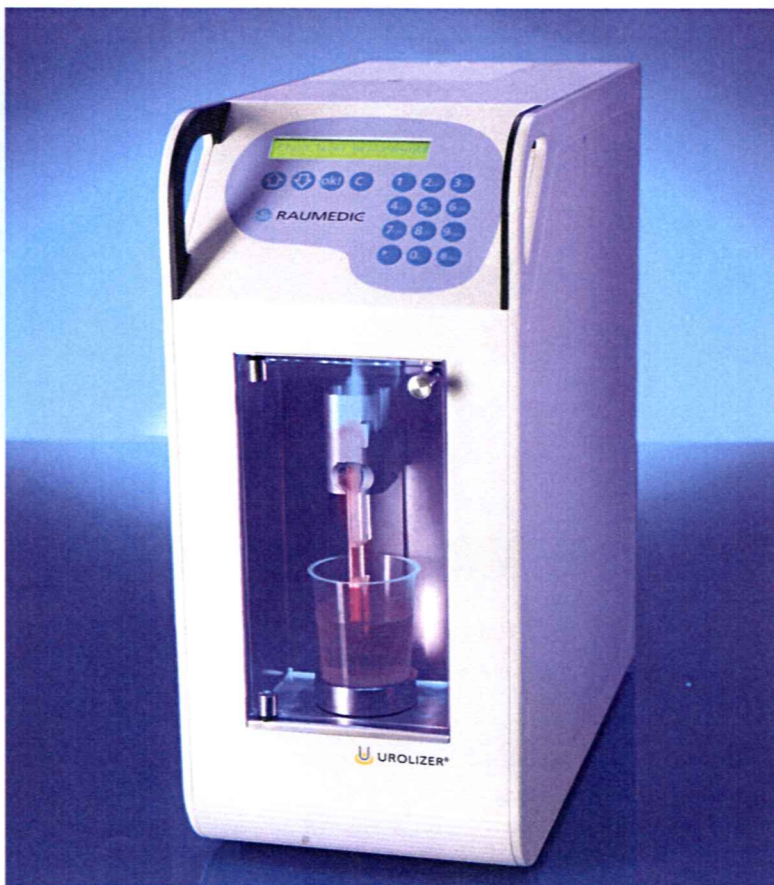




**RAUMEDIC®**  
— Lifeline to Health —

## Measure your patient's actual stone formation risk with the UROLIZER®.

The UROLIZER is a reliable analysis device for assessing a patient's present actual risk of forming urinary calcium oxalate stones via the BONN-Risk Index. The device provides precise and fast results and is simple to handle.



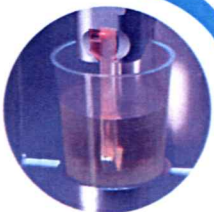
- **Precise:**  
Identification of the present actual crystallisation risk
- **Fast:**  
Results are available after around only 10 minutes
- **Simple to handle:**  
Native urine can be used.  
Requires no additional processing



 **UROLIZER®**

The UROLIZER is particularly suitable for

- Characterising **the base** risk of stone patients (prior to therapy)
- **Monitoring** the success of metaphylaxis
- Supporting patient **compliance** with metaphylaxis
- **Identifying** patients at risk (prophylaxis)



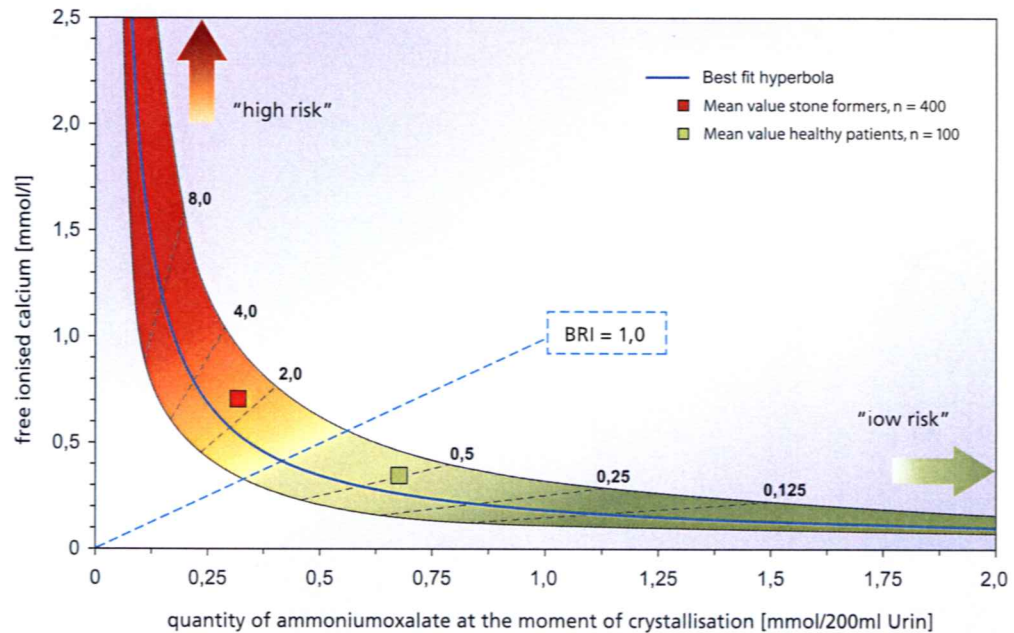
# BONN-Risk-Index<sup>1</sup>

The BONN-Risk-Index (BRI) is the measured result of a standardised in-vitro test used to assess the crystallisation risk of calciumoxalate in the urine.

$$\text{BRI} = \frac{[\text{Ca}^{2+}]}{(\text{Ox}^{2-})} = \frac{\text{free ionised calcium [mmol/l]}}{\text{quantity of ammoniumoxalate at the moment of crystallisation [mmol/200ml urine]}}$$

- All components of the untreated native urine are included in the risk assessment
- The present CaOx-stone formation risk can be accurately assessed with only two parameters

## BRI risk levels simplify crystallisation risk assessment



degree	BRI interval	risk
I	BRI < 0,125	negligible
II	0,125 ≤ BRI < 0,25	very low
III	0,25 ≤ BRI < 0,50	low
IV	0,50 ≤ BRI < 1,00	moderate
V	1,00 ≤ BRI < 2,00	increased
VI	2,00 ≤ BRI < 4,00	high
VII	4,00 ≤ BRI < 8,00	very high
VIII	BRI > 8,00	extremely high



<sup>1</sup> Laube N, Hergarten S, Hoppe B, Schmidt M, Hesse A: Determination of the Calcium Oxalate Crystallization Risk from Urine Samples: the Bonn Risk Index in Comparison to other Risk Formulas. J. Urol. 172, 355-359, 2004.

**RAUMEDIC AG**  
 D-95205 Münchberg  
 Tel.: +49 92 52/ 359-0  
 Fax: +49 92 52/ 359-1000  
 info@RAUMEDIC.com  
 www.RAUMEDIC.com

Copyright by RAUMEDIC AG

**FRECALL: 00800.RAUMEDIC**

**RAUMEDIC®**  
 – Lifeline to Health –